

JOSH GREEN, M.D.
GOVERNOR
STATE OF HAWAII
*Ke Kia'āina o ka Moku'āina 'o
Hawai'i*

SYLVIA J. LUKE
LT. GOVERNOR
STATE OF HAWAII
*Ka Hope Kia'āina o ka Moku'āina
'o Hawai'i*



KALI WATSON
CHAIRMAN, HHC
Ka Luna Ho'okele

KATIE L. DUCATT
DEPUTY TO THE CHAIRMAN
Ka Hope Luna Ho'okele

STATE OF HAWAII
DEPARTMENT OF HAWAIIAN HOME LANDS

Ka 'Oihana 'Āina Ho'opulapula Hawai'i

P. O. BOX 1879
HONOLULU, HAWAII 96805

August 18, 2023

**SUBJECT: Invitation to Participate in Beneficiary Planning Workshops to Create
DHHL's East Maui Master Plan and Environmental Assessment**

Aloha East Maui Beneficiaries:

The Hawaiian Homes Commission Act of 1921 did not identify any lands in East Maui for homesteading. However, in 1995, as part of the settlement of claims against the State, the Department of Hawaiian Home Lands (DHHL) received approximately 900-acres of land in East Maui, including: approximately 150-acres in Ke'ānae; 90-acres in Wailuanui; and 660-acres in Wākiu (see enclosed maps). I am happy to report that DHHL has contracted G70, a local, full-service planning, engineering, and architecture firm, to help develop DHHL's East Maui Master Plan and Environmental Assessment (Master Plan/EA). The Master Plan/EA is required before any use of the land can occur.

In developing the Master Plan/EA, it is important that we address the needs and desires of the beneficiaries who live in East Maui. To do this, G70 has designed a series of three (3) Beneficiary Planning Workshops that will occur at specific points in the planning process. In addition, we have decided to conduct separate workshops for Ke'ānae-Wailuanui and Wākiu, because we understand that you have different resources, opportunities, and issues. For each planning workshop, we will conduct one meeting for Ke'ānae-Wailuanui beneficiaries and we will conduct a separate meeting for Wākiu beneficiaries. This ensures that each community has our undivided attention. We invite you and your 'ohana to attend all three (3) Planning Workshops which are described below:

<u>PLANNING WORKSHOPS</u>	<u>DATES/LOCATIONS</u>	<u>PURPOSE</u>
Beneficiary Planning Workshop #1	Sept. 9, 2023 – Ke'ānae Sept. 10, 2023 – Wākiu	<ul style="list-style-type: none">• Purpose, Scope, Process, Timeframe• Visioning and Goals
Beneficiary Planning Workshop #2	Oct. 28, 2023 – Ke'ānae Oct. 29, 2023 – Wākiu	<ul style="list-style-type: none">• Design Charette to Identify Design Concepts and Map Land Uses
Beneficiary Planning Workshop #3	Jan. 27, 2024 – Ke'ānae Jan. 28, 2024 – Wākiu	<ul style="list-style-type: none">• Presentation and Discussion of Preferred Master Plan Elements

East Maui Beneficiaries
August 18, 2023
Page 2

We will send you additional meeting details as it gets closer to each workshop. Details are listed below for our Beneficiary Planning Workshop #1. The same material will be presented at both workshops, so you do not need to attend both workshops. Please attend the workshop that is most appropriate for you and your 'ohana.

Ke'anae-Wailuanui Beneficiary Planning Workshop #1

Saturday, September 9, 2023
10:00 a.m. to 2:00 p.m. (lunch will be provided)
Ke'anae Uka Dining Hall

Wākiu Beneficiary Planning Workshop #1

Sunday, September 10, 2023
10:00 a.m. to 2:00 p.m. (lunch will be provided)
Hana High and Elementary School Cafeteria

We will provide lunch during the workshop, so please let us know your name, which workshop you plan to attend, and how many people will be attending. Please **RSVP by Friday, September 1, 2023**, via email: DHHLEastMauiMP@g70.design or by phone or text: 808-779-5084.

Beneficiary Planning Workshop #1 will provide information about the purpose and scope of the Master Plan/EA, our planning process, and project timeframe. We will share preliminary maps on existing conditions and will ask you to make corrections or add items that you think should be included.

We will ask you to envision positive and enlightened futures for your community and our DHHL East Maui lands 10 to 20 years from now. Thinking about the future you are picturing – what kind of shared values does the community embrace? What is the condition of our watershed, streams, shoreline, historic sites, wahi pana, roads, schools, and social services? How has our diet and health improved? Where are your family members living? What kind of activities does the community engage in? You do not need the answers to all these questions. The purpose of the exercise is to envision your preferred future and to think about how we can achieve those goals. What are key changes that need to occur to make that future possible?

Think about it, sleep on it, and talk about it. We look forward to seeing you and your 'ohana at the Beneficiary Planning Workshop #1.

East Maui Beneficiaries
August 18, 2023
Page 3

If you have any questions or concerns, please feel free to reach out to one of the contacts below:

G70 Project Team

Email: DHHEastMauiMP@g70.design

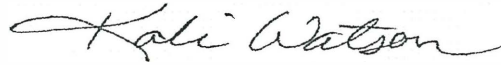
DHHL Planning Office

Julie-Ann Cachola, DHHL Project Manager

Phone: 808-779-5084

Email: julie-ann.cachola@hawaii.gov

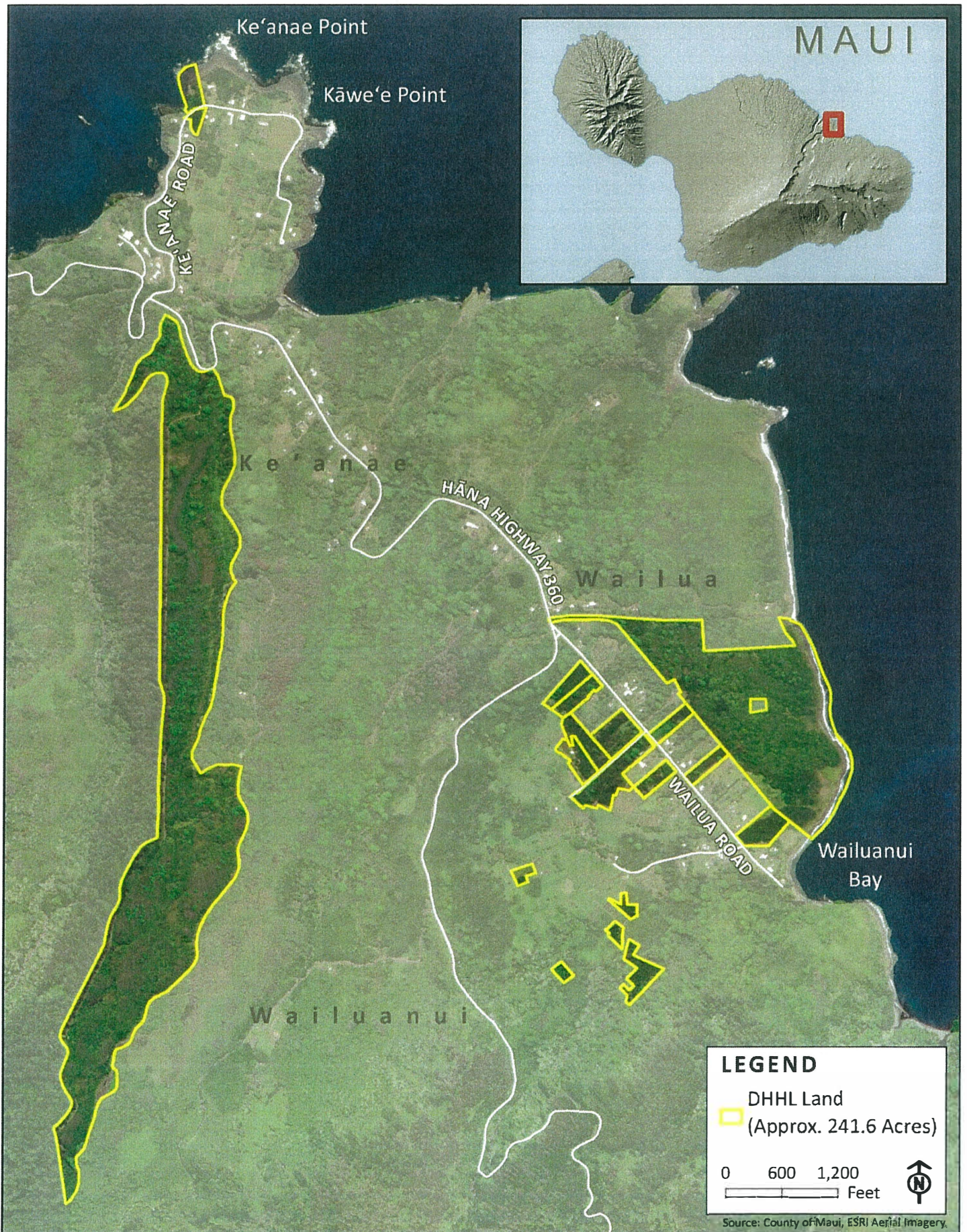
Aloha,



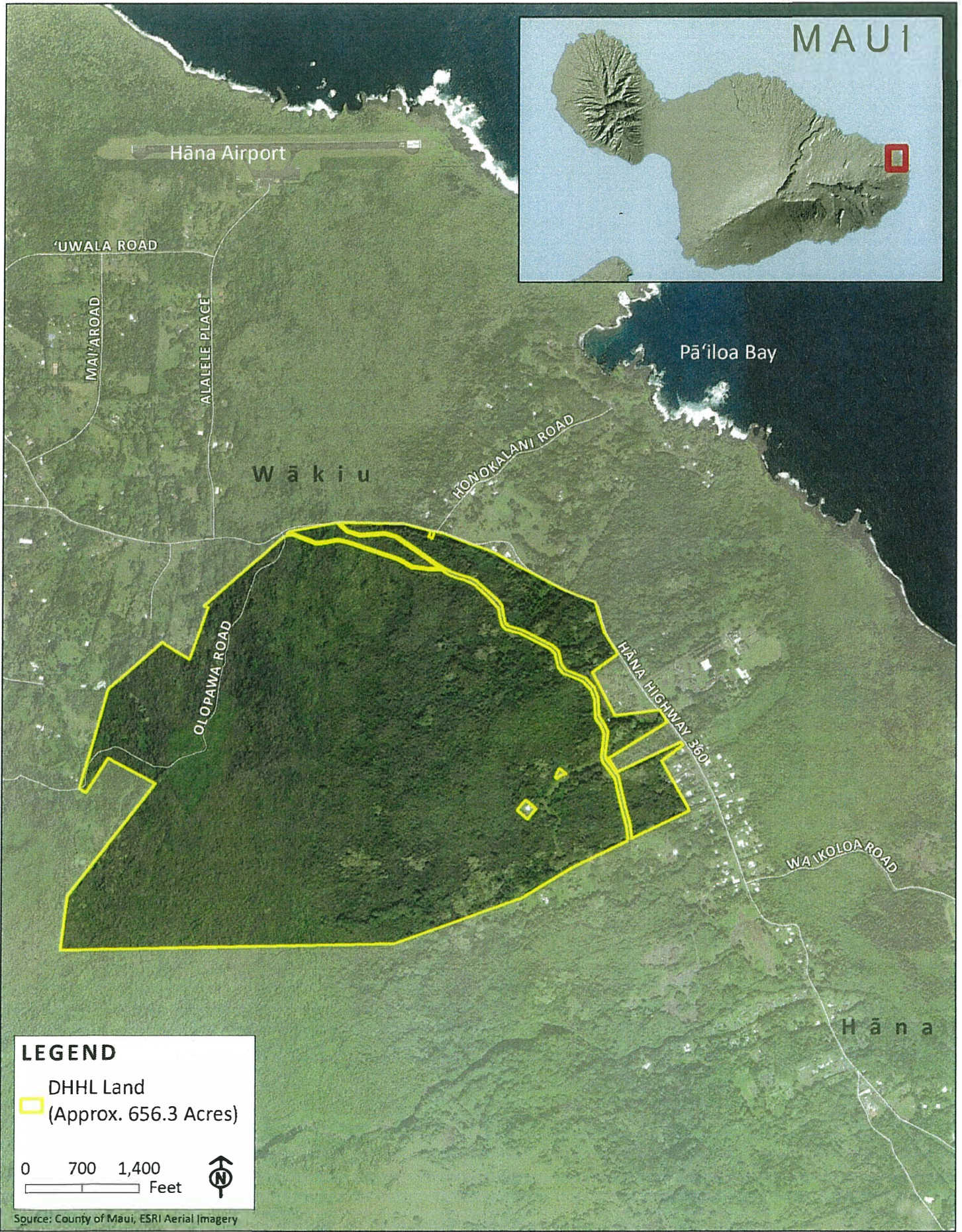
Kali Watson
Chairman
Hawaiian Homes Commission

Enclosures

HAWAIIAN HOME LANDS TRUST - KE'ANA'E AND WAILUANUI LANDS



HAWAIIAN HOME LANDS TRUST - WĀKIU LANDS



MAUI

Hāna Airport

'UWALA ROAD

MAI'AROAD

ALALLELE PLACE

Pā'iloa Bay

Wākiu

HONOKALANI ROAD

OLOPAWA ROAD

HĀNA HIGHWAY 360

WAIKOLOA ROAD

Hāna

LEGEND

DHHL Land
(Approx. 656.3 Acres)

0 700 1,400
Feet



Source: County of Maui, ESRI Aerial Imagery